
CACHE-A

Library24 READ ME FIRST

Cache-A Library24 Option Initial Instructions for:
Model CA-L4024 – LTO-4 Library Option
Model CA-L5024 – LTO-5 Library Option

To be used in conjunction with the 2U Tape Library getting started guide

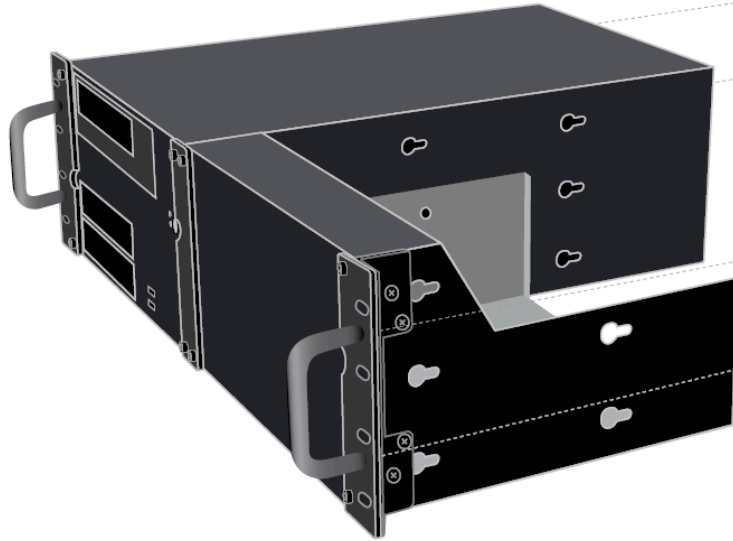
Installing the Cache-A Library24 Option

This document makes references to the included “2U Tape Library getting started” document. That document is a general getting started description of the library system, this Read Me provides specific notes for use with the Cache-A Pro-Cache system.

Physical Mounting

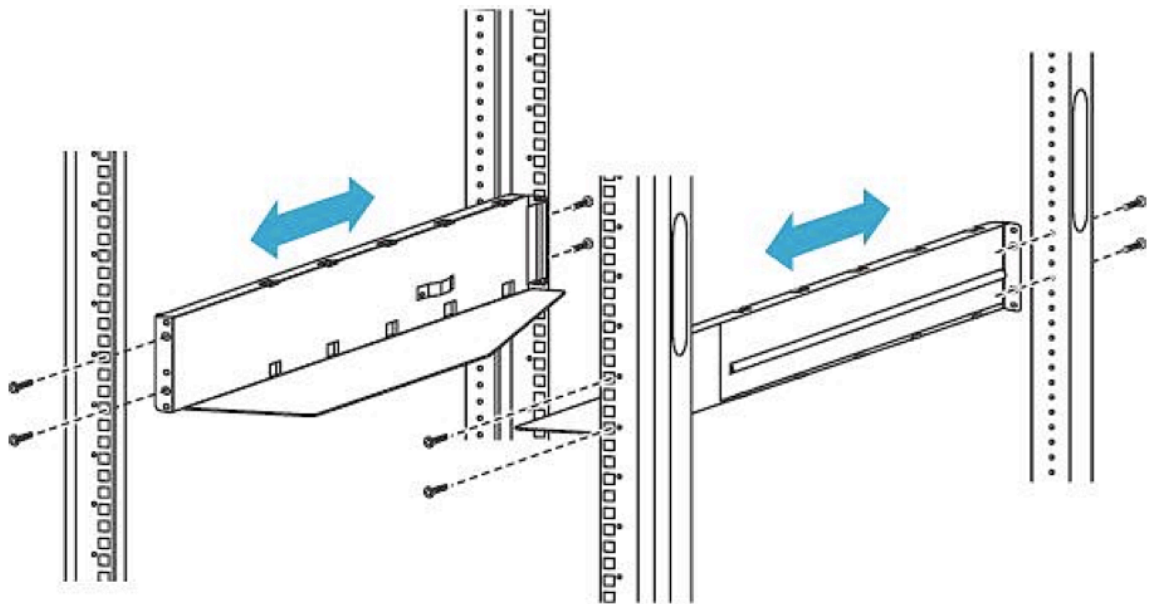
The Library24 option must be rack mounted utilizing the provided rack rails within 1 meter of the Pro-Cache using the provided SAS interconnect cable.

We recommend that you allow a contiguous 5 RU for the combined system. If your Pro-Cache is not already attached to its own rack mounting kit, we recommend that you first prepare it for rack mounting following the instructions provided with that rack kit.



Pro-Cache and filler plate ready for rack mounting

Once the Pro-Cache is prepared for racking, install the provided Library rack rails securing both front and rear with the screws provided, allowing 3 RU above the library for the Pro-Cache.



Install the provided Library Rack Rails

Observe the correct front to back orientation: note that the rear of the rack mount is a sliding bracket to accommodate a range of rack

depths. Assure that the small posts protruding on each of the bracket's rail mounted surfaces align with holes in the rack rails.

Remove the Library unit from its packaging and remove and store the shipping lock as shown in section 1 of the getting started guide. Please retain the packing materials in case the system ever needs to be shipped again.



Important

The shipping lock must be removed for the robotics to work properly.

Retain this lock as shown in the guide in case the unit ever needs to be shipped for repair – units returned without this lock in place in the original packing materials may not be covered by our warranty.

Next slide the Library unit into the rack and secure as shown in section 2 of the getting started guide.

Mount the Pro-Cache in the reserved 3U space above the Library option. Note that the Pro-Cache must be fully supported by the rack mounting and not bear weight on the library chassis.



Warning

NOTE: Do not rest any objects on top of the library chassis.

Any weight on the library top panel can cause it to deflect enough to interfere with the robotics movement and cause errors.

Electrical Connections

Connect the provided SAS cable from the Pro-Cache Multi-Lane connector to the Library24 SAS connector as shown in section 4c of the getting started guide.

Connect a Gb Ethernet cable to one of the Ethernet ports on the Pro-Cache via an appropriately configured network. For more information about connecting this system to a network, please refer to the Pro-Cache Getting Started guide provided with that system.

Optionally connect a Gb Ethernet cable to the Library24 Ethernet port. Note that this connection is not required at this time but may be needed to access the library's diagnostics using its Remote

Management Interface (RMI) as described in the introduction of the getting started guide.

Connect AC power to both the Library24 and Pro-Cache systems. Once all the above connections are completed, power on the Library using the front panel power button (getting started guide section 8). Observe the front panel display and power on the Pro-Cache once the Library display indicates “**Drive RDY.**”

The Library is shipped configured by default to network using a router assigned IP address (DHCP). To find that address or to manually set a different IP address, follow the instructions in section 9 of the getting started guide using the buttons on the front panel or Operator Control Panel (OCP).

Loading the Library with Tapes

Tapes are loaded into the Library’s left and right magazines, 12 at a time as described in section 15 of the getting started guide. As the magazines can only be ejected for this purpose when the robotics are not in use, you should try to fully load each magazine when possible.

When selecting tapes to load into your library, note the following information:

- LTO systems can read and write back 1 generation and read back 2 generations, thus for example, you use LTO-4 and LTO-5 tapes in an LTO-5 Library and read-only LTO-3 tapes.
- Your library will be able to read and write to any appropriate version tape written in any Cache-A system.
- You can also read and write to new tapes.
- If you insert tapes written with non-Cache-A systems, you will have the option to re-initialize them from the Cache-A web interface but will not be able to use those tapes until you have done so.

Cache-A Library systems work with both bar code labeled tapes and with tapes without such labels, however we strongly recommend you use appropriate bar code labels as noted in section 14 of the getting started guide.



Important

Every time the Library24 performs an inventory it will immediately know the contents of each bar-coded tape as soon as it is scanned (assuming the tape is in the Pro-Cache catalog). Each

tape encountered in an inventory process without a bar code must be physically loaded into the tape drive, significantly lengthening the inventory process.

To load a magazine, use the Operator Control Panel **PREVIOUS-NEXT** buttons to navigate to the “**Operations**” menu, then select the **ENTER** button and continue using the **PREVIOUS-NEXT** buttons to access “**Unlock Left Magazine**” (or right magazine) and select **ENTER** again to complete the unlocking procedure.

You can now slide out the selected magazine. Load tapes as desired as described in section 15 of the getting started guide and reinsert the magazine into the Library. It will immediately commence an inventory to learn what new tapes are in that magazine.

Once the inventory process is completed and the front panel display again reports “**Drive RDY,**” your Library24 Option is ready for use.

Preparing the Pro-Cache for Library Operations

The connected Pro-Cache system must be updated to version 1.3 or later in order to work with a Cache-A Library Option.

To determine your version, refer to the Cache-A Getting Started Guide or the “Getting Started” section of the Users Manual to get system networking properly setup and to access the Pro-Cache user interface web page. Once logged in, please check the revision of the system software under the **Versions** page.

If the system is not at v1.3 or later you will need to do a software update. Select the **System Tools** page and the Software Update tab. You should see advice that an update is available for this system. Select the **Download** option and click on **OK**. After this selection, wait until the system drive LED activity goes quiescent and then log out using the **Log Out cache** menu item. You can then log back in and begin using the system.

If there is no update available, please contact Cache-A support.

For basic archiving operations and Cache-A Library24 operations, consult the full Users Manual.