

Frequently Asked Questions

File Access Mode (FAM) set-up for the PDW-V1 & PDW-1500



008-28112005

Question

How do I setup my PDW-V1 or PDW-1500 XDCAM player-recorder for file-based access (FAM) ?

Answer

To set-up your XDCAM deck for file-based transfers you must check/change a menu setting. This menu-item is part of the extended menu. See the manual of the deck if the item is not displayed to see how you can enable the extended menu.

Depending on the firmware version of your deck this item can have two names;

For a deck with firmware lower than 1.45 set menu "215:PC REMOTE" to "ena" to enable the FAM mode of the I-Link connection.

```
REMOTE INTERFACE
119:VAR SPD LIM - off
130:DIMMER - 6
131:AUDIO VOLUME- each
143:INDEX POS - Usec
214:REMOTE I/F - 9PIN
*215:PC REMOTE - ena
257:NETWORK ENA - net
301:VAR RANGE - -2~+2
308:STD/NON-STD - STD
310:REC INHIBIT - off
311:EDIT RPLCE1 - ch 1
```

For a deck with firmware 1.45 or higher set menu "215:i.LINK MODE" to "FAM" to enable the FAM mode of the I-Link connection.

```
REMOTE INTERFACE
130:DIMMER - 6
131:AUDIO VOLUME- each
142:REPEAT MODE - off
143:INDEX POS - Usec
214:REMOTE I/F - 9PIN
*215:i.LINK MODE - FAM
257:NETWORK ENA - net
258:LIVE LOGGING- off
301:VAR RANGE - -2~+2
308:STD/NON-STD - STD
310:REC INHIBIT - off
```

Before connecting the deck to a Windows based computer you will first have to install the FAM driver so the computer will recognize the deck.

The FAM driver is included in the PDZ-1 Proxy Browsing installation CD which is included with every new deck.

You can either install the PDZ-1 software which will also install the FAM driver or you can install the FAM driver separately by navigating to the "FAM Driver" folder on the CD and running the setup.exe in that folder.

After installing the FAM driver you can connect the deck to your PC and switch it on.

Windows will probably show a "New hardware found" wizard, which you can complete.

After this you will get a new CD-Drive which represents your deck. If you insert a disc the drive name will change to "XDCAM" and you can browse the files on the disc.

During the FAM connection the decks will display "PC REMOTE!" in the display and you cannot control the deck.

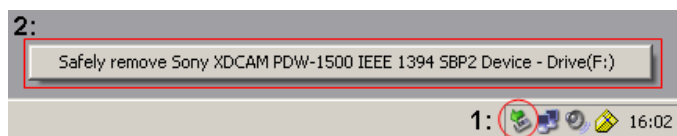
Frequently Asked Questions

File Access Mode (FAM) set-up for the PDW-V1 & PDW-1500

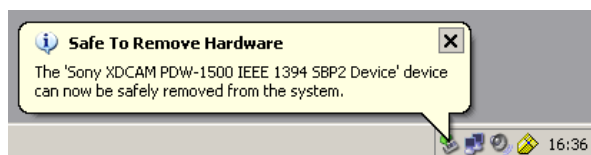


008-28112005

When you are finished you must click the "Safely Remove Hardware" icon in the taskbar and choose the camcorder from the menu to safely terminate the connection:

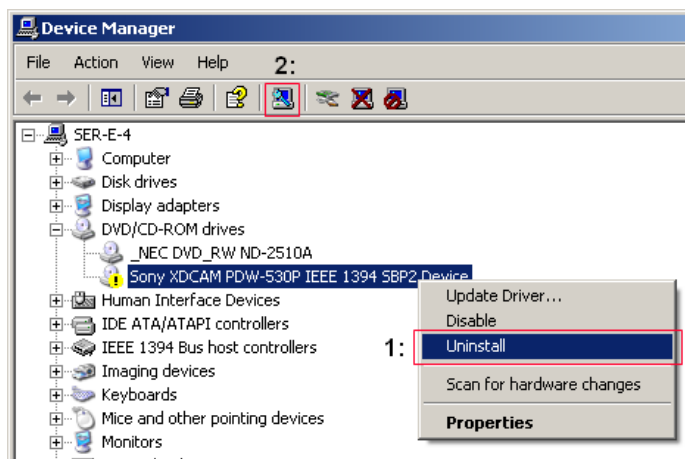


To confirm that the camcorder can be removed from the system, Windows will display the following message.



When reconnecting the deck, it often seems the deck is not detected. To solve this you will have to follow these steps:

1. Open the Windows device manager → Start>Run>devmgmt.msc
2. You will see the deck detected, but it will have a yellow exclamation icon
3. Uninstall the deck by means of the right click menu (1: in the screenshot)
4. Scan for new hardware: the deck will be detected and you must walk through the "New hardware found" wizard. (2: in the screenshot)
5. After this the yellow exclamation mark will disappear and the deck will function again as a FAM device.



When the deck is connected successfully through FAM you can use it to:

- Copy proxy/hi-res files by means of the Windows Explorer
- Store files in the general folder of the disk
- Work with the Sony PDZ-1 Proxy Browsing Software
- Work with Avid software in a file-based way (Newscutter and up)
- ...